



THE  
PRESIDENTIAL  
TOWER  
★★★★★



CNTC HONG KONG

# CONSTRUCTION

Update (April 2026)

[WWW.THEPRESIDENTIALTOWER.CO.IN](http://WWW.THEPRESIDENTIALTOWER.CO.IN)



## THE PRESIDENTIAL TOWER

The Presidential Tower is the tallest residential tower of Bengaluru that incorporates an exquisite blend of infinite opulence and panoramic vistas sprawling along the land area of approx. 5 acres. Each floor features eight spacious, well-lit, thoughtfully designed, and naturally ventilated 3 & 4 bed residencies.

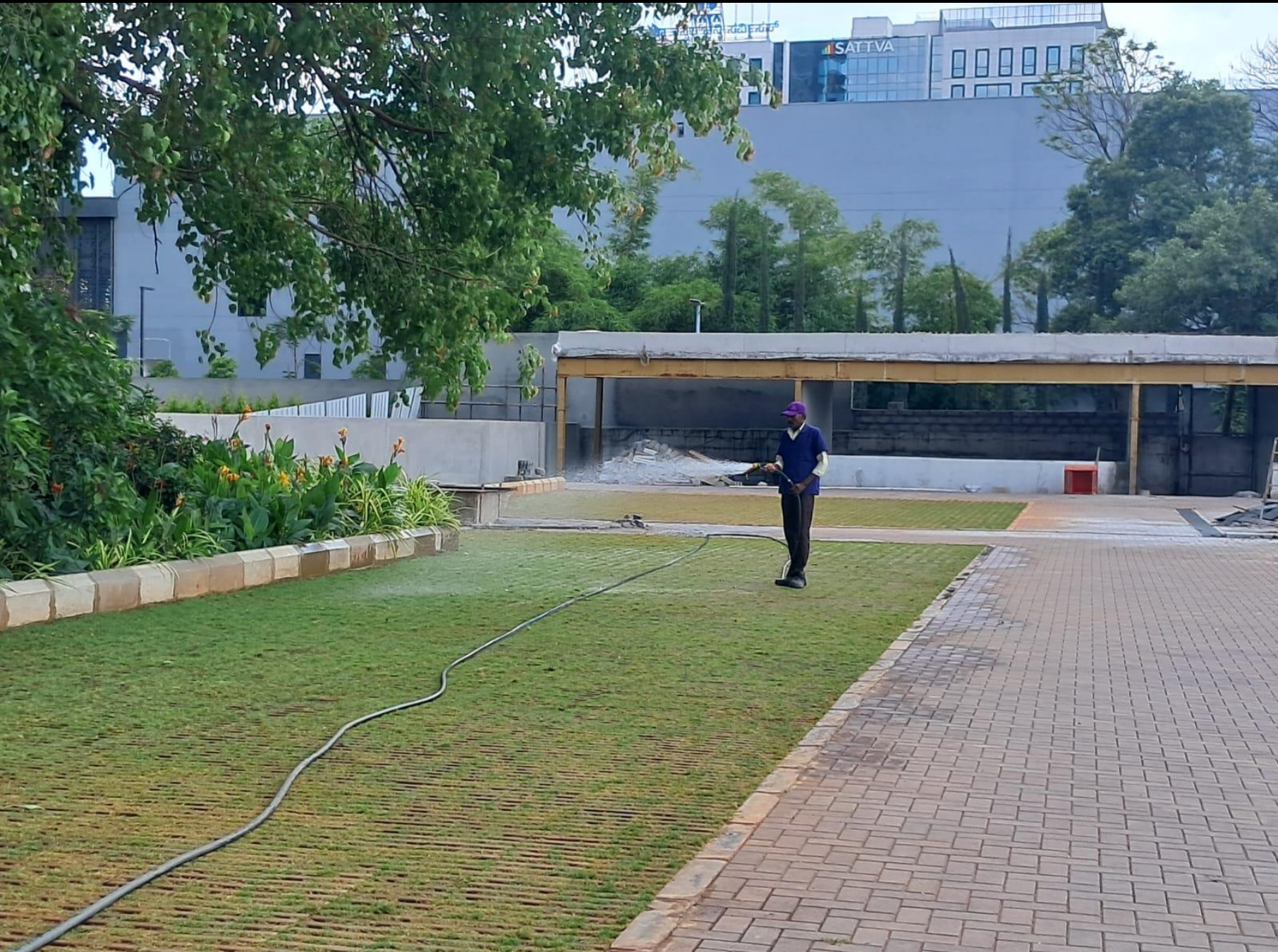
Are you ready to experience a life full of fascinating retreat with jaw-breaking celestial views everyday? Claim your bespoke luxury residence today!



## 1. Entrance Arch work in progress



2. Visitor car parking lawn work in progress



3. Transformer yard fencing work in progress



4. Landscape work in progress



5. Granite flooring work in progress at South East Side landscape area



6. Granite flooring work in progress at east side landscape area



7. Granite flooring work in progress at South East Side landscape area



8. Children Play area EPDM flooring to be done



9. Skylight opening work to be done



10. East side fencing area block work in progress



11. Landscape garden plantation work in progress



## 12. Facade ACP paneling work in progress



13. Facade ACP paneling work in progress



## 14. Facade glass fixing work in progress



15. Facade glass fixing work in progress



16. Granite flooring work in progress



17. Pavers work in progress



**18. Ground floor club house wire pulling work in progress**



- 1)Electrical light point & fan points wiring
- 2)Power point wiring
- 3)Ac points wiring
- 4)Data points wiring

**19. Lobby boxing work in progress**



20. Month of April 2026 Tower A Marble laying completed flats



PA 2302



PA 2304



PA 2601



PA 2602



PA 2603



PA 3201



PA 3301



PA 3402



PA 3404

21. Month of April 2026 Tower A Marble laying completed flats



PA 3504



PA 4303

22. Month of April 2026 Tower B Marble laying completed flats



PB 1302



PB 1303



PB 1304



PB 1403



PB 1404



PB 1702



PB 1704



PB 1802



PB 1803



PB 1804

23. Month of April 2026 Tower B Marble laying completed flats



PB 2004



PB 2103



PB 2202



PB 2204



PB 2602



PB 2604

24. Tower B 1103 MBR floor tile and dado tile work in progress



25. Tower A 11th floor corridor false ceiling work in progress



26. Tower A all lift area dado tile work complete



27. Tower A 153 mtr level IMR railing work completed



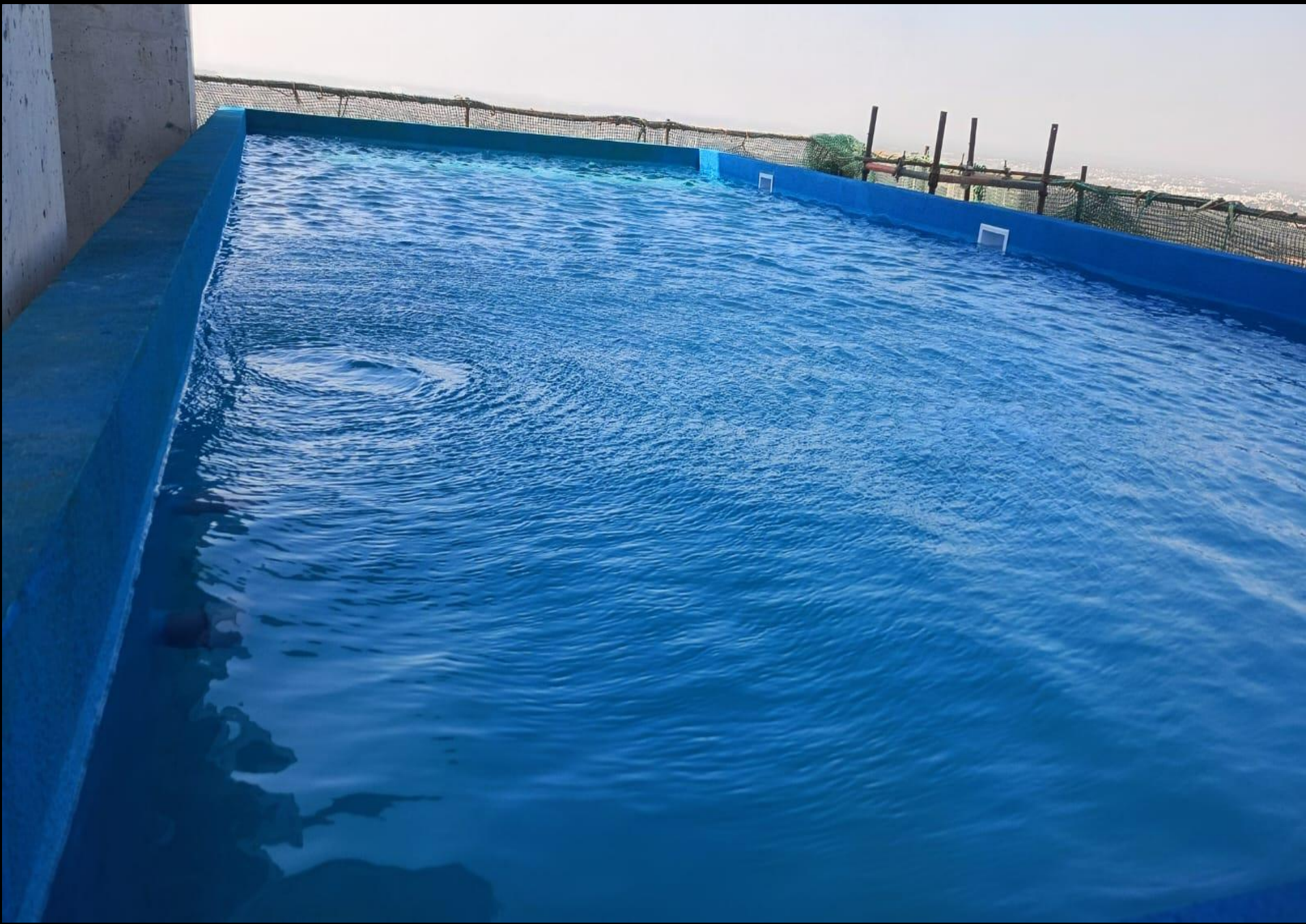
28. Tower B 153 mtr level IMR railing work completed



29. Infinity swimming pool work in progress



30. Kids swimming pool work in progress



31. Tower A Terrace ring line work completed



32. Tower B Terrace ring line work completed



33. Tower A & Tower B lightning arrester strip laying in progress



34. Tower A 29th floor corridor wiring work in progress



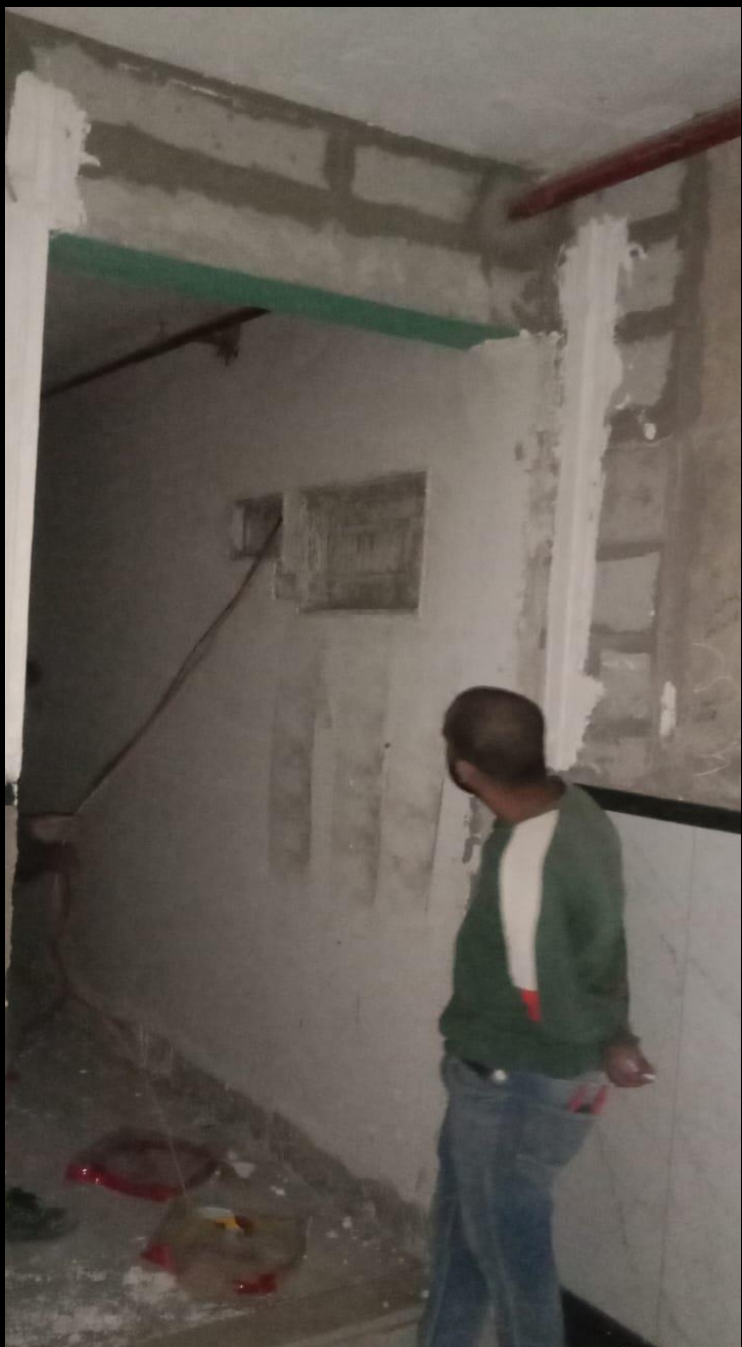
35. Tower A 35th floor staircase lights fixing work in progress



**36. Tower B Sub main wire pulling work in progress**



**26<sup>th</sup> floor**



**34<sup>th</sup> floor**



**35<sup>th</sup> floor**



**39<sup>th</sup> floor**



**49<sup>th</sup> floor**

37. Tower B 3803 DPC curing work in progress



38. Tower B 4903 block work in progress



39. Tower A 37th floor corridor gypsum plastering work complete



40. Tower B 34th floor corridor gypsum work in progress



41. Tower A 01 flat West side texture work in progress



42. Tower B 01 flat East side texture work in progress



**43. Tower A : 4 passenger & 1 service lifts**

**L1 : Lift Ready high-speed completed final adjustment in progress**  
**L2: Lift Ready high-speed completed final adjustment in progress**  
**L3: Lift Ready high-speed completed final adjustment in progress**  
**L4 :Lift in operational**  
**L9 : Service lifts - Entrance door block work completed.**  
**Inside primer work completed, Syncon team work in progress**



**44. Tower B : 4 passenger & 1 service lifts lifts**

**L5 : Lift Ready high-speed completed final adjustment in progress**  
**L6 : Lift Ready high-speed completed final adjustment in progress**  
**L7 : Lift Ready high-speed completed final adjustment in progress**  
**L8 : Lift Ready high-speed completed final adjustment in progress**  
**L10 : Service lift- - Entrance door block work completed.**  
**Inside primer work completed, Syncon team work in progress**



45. Tower A Corridors Main doors & Servant door work in progress



PA 1101



PA 1102



PA 1201



PA 1202



PA 1204

46. Tower A Corridors Main doors & Servant door work in progress



PA 1301



PA 1302



PA 1304



PA 1401



PA 1403

47. Tower A Corridors Main doors & Servant door work in progress



PA 1404



PA 1501



PA 1503



PA 1504



PA 1601

48. Tower A Corridors Main doors & Servant door work in progress



PA 1604



PA 1701



PA 1702



PA 1703



PA 1704

49. Tower A Corridors Main doors & Servant door work in progress



PA 1801



PA 1803



PA 1804



PA 1901



PA 1904

50. Italian marble | Concrete solid blocks | Concrete Cobbles | Facade glass | Granite arrived @ site



# Common Areas

## TOWER – A (PA)

## TOWER – B (PB)

- **Tiles**

Floor	: 100%	} 99%
Dado	: 100%	
Lift Lobby	: 98%	

- **Windows**

Duct Doors	: 92%	} 71%
Corridor Windows	: 92%	
Lobby windows	: 81%	
Staircase windows	: 90%	
Louvers	: 2%	

- **Gypsum** : 99%

- **Tiles**

Floor	: 99%	} 98%
Dado	: 97%	
Lift Lobby	: 92%	

- **Windows**

Duct Doors	: 92%	} 40%
Corridor Windows	: 2%	
Lobby windows	: 19%	
Staircase windows	: 90%	
Louvers	: 0%	

- **Gypsum** : 73%

Grand Total

90%

70%

**Due to ongoing works at site and continuous movement of materials within site premises, customer visit to site are not allowed for safety reasons**

**Customer site visit remains closed till 30<sup>th</sup> June 2026**

**THANK YOU.**

[www.thepresidentialtower.co.in](http://www.thepresidentialtower.co.in)