

# LUXURY LIVING. ELEVATED TO NEW HEIGHTS.



RERA Registration No. PRM/KA/RERA/1251/309/PR/171014/000565

TALLEST RESIDENTIAL TOWER IN SOUTH INDIA  
**CONSTRUCTION UPDATE**  
DECEMBER 2020





These are the latest photographs of the progress at the construction site, to give you an insight into the work that has been completed in the last month. **We value your trust in CNTC Hong Kong and thank you for your support.**

## *1. Podium Driveway*



2. Front view



3. Side View



4. View of Block A



5. View of Block B



6. A-1, 32 floor concreting work in progress



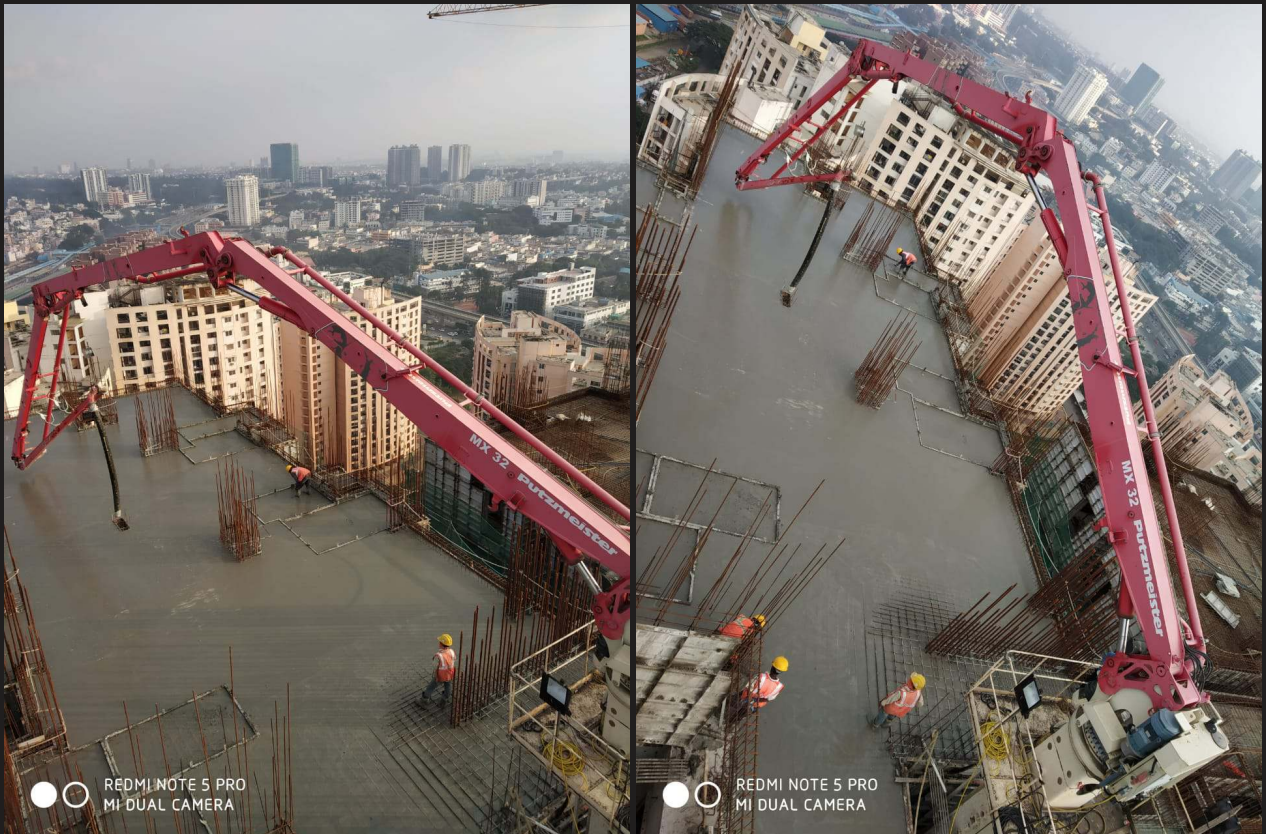
7. A-3, 32nd floor slab reinforcement work in progress



8. B-3, 31st floor slab reinforcement work in progress.



9. B-2, 31 st floor slab concreting work completed



10. B-3, 31st floor slab reinforcement work in progress.



11. Bar bending & cutting in progress







THE  
PRESIDENTIAL  
TOWER



The Presidential Tower

No. 8, Tumkur road, Near The Taj, Yeshwanthpur, Bengaluru - 560022.

Ph. +91 96861 07178 | [www.cntcindiaprojects.com](http://www.cntcindiaprojects.com)

RERA Registration No. PRM/KA/RERA/1251/309/PR/171014/000565

# CNTC PORTFOLIO

Across 6 Continents | Over 500 Projects Delivered | Reputed for Quality and on - time Delivery



Shanghai Lupu Bridge



Shanghai Tower



Shanghai World Financial Center  
Shanghai Jinmao Tower



Gate of the Orient



Oriental Pearl TV Tower



T3 Terminal of Beijing Capital International Airport