

LUXURY LIVING.
ELEVATED TO NEW HEIGHTS.



RERA Registration No. PRM/KA/RERA/1251/309/PR/171014/000565

TALLEST RESIDENTIAL TOWER IN SOUTH INDIA
CONSTRUCTION UPDATE
FEBRUARY 2021



These are the latest photographs of the progress at the construction site, to give you an insight into the work that has been completed in the last month. **We value your trust in CNTC Hong Kong and thank you for your support.**

1. Podium Driveway



2. Front view



3. Side View



4. View of Block A



5. View of Block B



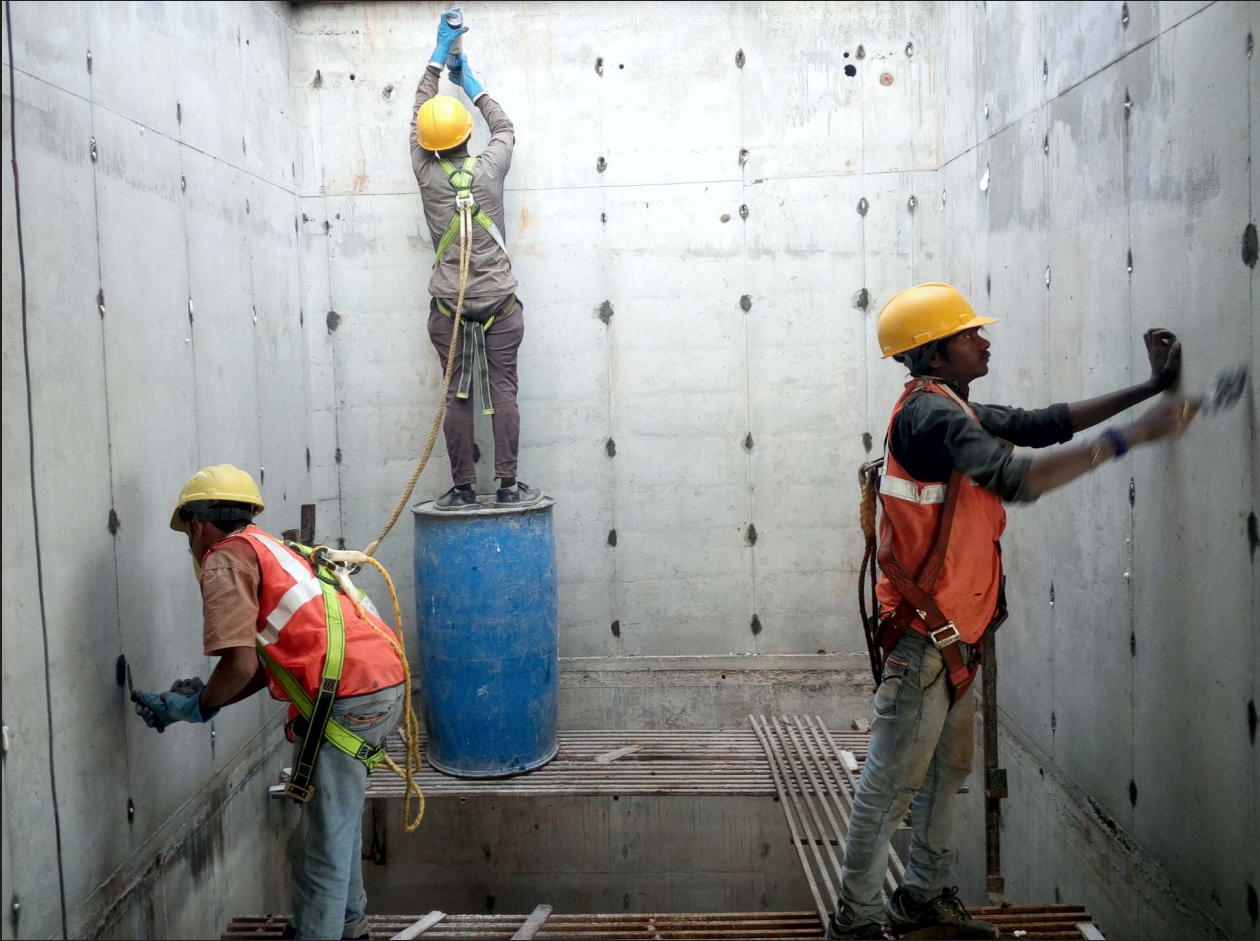
6. 33rd floor shuttering work in progress on Tower A



7. 32nd floor concreting work in progress on Tower B



8. 32nd floor wall tie hole packing work in progress on Tower A



9. 32nd floor Grinding work in ceiling Tower A



10. Slab concrete completed in B3 - 32nd floor



11. Procurement of Materials



12. Admixtures received at the site



13. Cube casting of concrete for the compressive

strength test of concrete for 32nd floor.



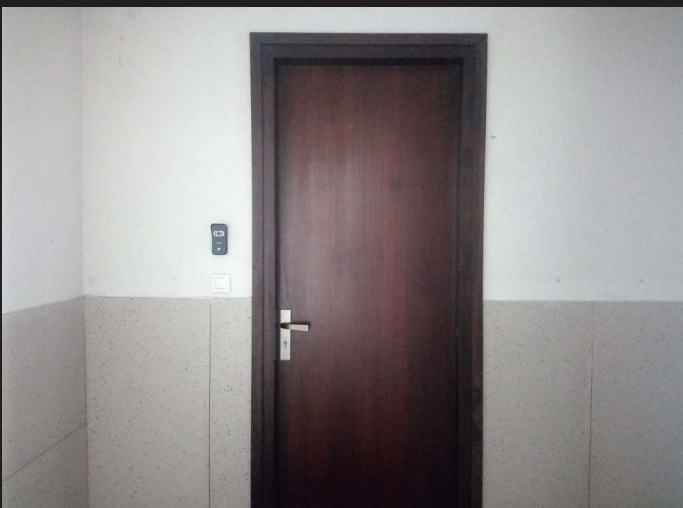
14. Actual Flat Completed



Final coat of painting Completed



Kitchen counter slab fixing work completed



Door fixing & polishing work Completed



CP & Sanitary fixtures fixing work Completed



THE
PRESIDENTIAL
TOWER



The Presidential Tower

No. 8, Tumkur road, Near The Taj, Yeshwanthpur, Bengaluru - 560022.

Ph. +91 96861 07178 | www.cntcindiaprojects.com

RERA Registration No. PRM/KA/RERA/1251/309/PR/171014/000565

CNTC PORTFOLIO

Across 6 Continents | Over 500 Projects Delivered | Reputed for Quality and on - time Delivery



Shanghai Lupu Bridge



Shanghai Tower



Shanghai World Financial Center
Shanghai Jinmao Tower



Gate of the Orient



Oriental Pearl TV Tower



T3 Terminal of Beijing Capital International Airport