

LUXURY LIVING.  
ELEVATED TO NEW HEIGHTS.



RERA Registration No. PRM/KA/RERA/1251/309/PR/171014/000565

TALLEST RESIDENTIAL TOWER IN SOUTH INDIA  
**CONSTRUCTION UPDATE**  
MARCH 2021





These are the latest photographs of the progress at the construction site, to give you an insight into the work that has been completed in the last month. **We value your trust in CNTC Hong Kong and thank you for your support.**

## *1. Podium Driveway*



2. Front view



3. Side View



4. View of Block A



5. View of Block B



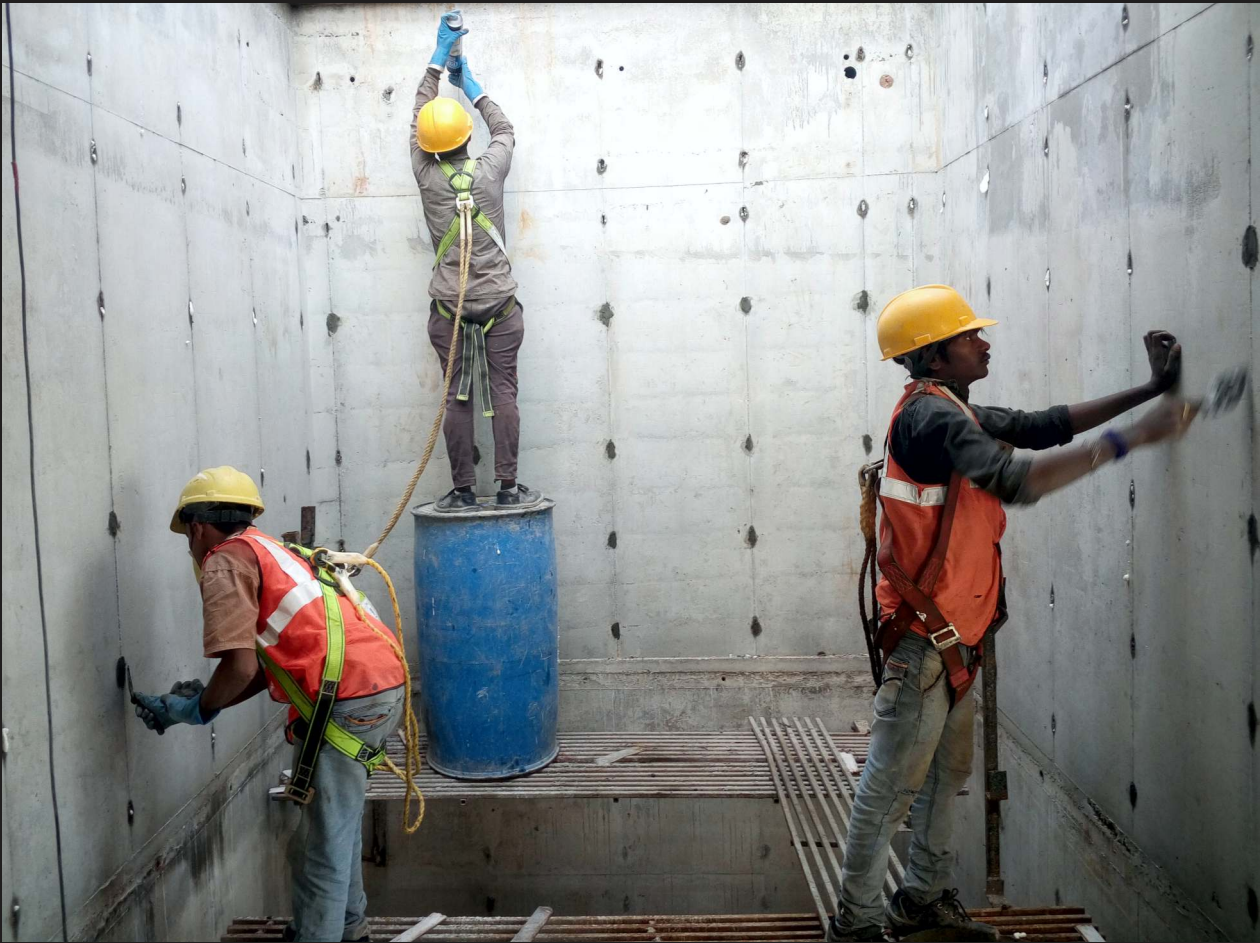
6. 33rd floor shuttering work in progress on Tower A



7. 32nd floor concreting work in progress on Tower B



8. 32nd floor wall tie hole packing work in progress on Tower A



9. 32nd floor Grinding work in ceiling Tower A



10. Slab concrete completed in B3 - 32nd floor



11. Procurement of Materials





12. Admixtures received at the site



13. Cube casting of concrete for the compressive

strength test of concrete for 32nd floor.



14. Construction steel received at the site



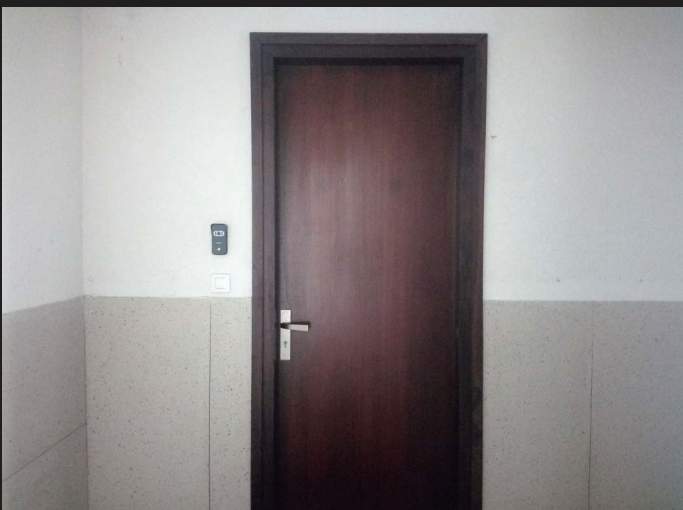
*15. Actual Flat Completed*



*Final coat of painting Completed*



*Kitchen counter slab fixing work completed*



*Door fixing & polishing work Completed*

*CP & Sanitary fixtures fixing work Completed*



THE  
PRESIDENTIAL  
TOWER



The Presidential Tower

No. 8, Tumkur road, Near The Taj, Yeshwanthpur, Bengaluru - 560022.

Ph. +91 96861 07178 | [www.cntcindiaprojects.com](http://www.cntcindiaprojects.com)

RERA Registration No. PRM/KA/RERA/1251/309/PR/171014/000565

# CNTC PORTFOLIO

Across 6 Continents | Over 500 Projects Delivered | Reputed for Quality and on - time Delivery



Shanghai Lupu Bridge



Shanghai Tower



Shanghai World Financial Center  
Shanghai Jinmao Tower



Gate of the Orient



Oriental Pearl TV Tower



T3 Terminal of Beijing Capital International Airport