



THE
PRESIDENTIAL
TOWER



THE TALLEST TOWER IN BENGALURU

NEAR TAJ, YESHWANTHPUR

WELCOME TO 50 FLOORS OF EXCEPTIONAL LIVING

Take a bow, Bengaluru. And look up to the new lord of the skies - The Presidential Tower. The ultimate in luxury. The paramount in style. The pinnacle of glory. They are reserved for you. Embodying all that you are, and all that you wish to be. It is your throne to rule over the rest. A resounding statement of success. A resonating soliloquy of triumph. A sonnet. A poem. An epic. We might run out of adjectives to describe it. But it will never run out of ways to amaze you. A landmark to the world. Home, to a rarified few.

A ROYAL ABODE IN THE DISTRICT OF POWER - YESHWANTHPUR

The Manhattan of Bengaluru. That's the moniker Yeshwanthpur has adopted. Who are we to argue? After all, it does play host to some of the rich and famous visitors at its luxury hotels like The Sheraton and Taj Vivanta. World Trade Centre and Orion Mall orchestrate the power play of commerce.

This locality does not seek validation. What it needs, though, is a crown jewel. That is precisely what The Presidential Tower is. And if you don't claim your rightful place in it, who else can? Be the proud owner of **The Presidential Tower - The Tallest Tower of Bengaluru.**

VIEW TOWARDS JP PARK 85 ACRES WITH 4 LAKES



PARTNER FOR TECHNOLOGY CONSTRUCTION & MANAGEMENT

CNTC is a Hong Kong-based real estate developer, a part of the 15 billion USD Jiangsu Nantong San Jian conglomerate. It has completed mega projects in over 30 countries and 120 cities across the globe.

The Federal Mansion in Russia, The Kuwait Palace, The Shanghai Tower, The Oriental Pearl TV Tower, Shanghai World Financial Center, Beijing Olympic Stadium, The Gate of the Orient, Nanjing Zifeng Tower are a few landmark projects of the company. Many awards across the globe have recognized CNTC.

THE PRESIDENTIAL TOWER at Yeshwanthpur, Bengaluru is the first project between BGDPL and CNTC in a partnership. While CNTC is constructing and managing the project, the land is provided by BGDPL.

After transforming the Shanghai skyline, CNTC is now in Bengaluru, to launch the tallest tower of the city.

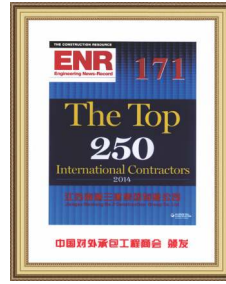


An artist's impression

The four tallest towers of Shanghai are a part of CNTC's portfolio.



Since 1968, CNTC has been creating landmarks that have become an integral part of cities around the globe. Our commitment to exceptional quality, artistry, and our drive to conquer new horizons reflect in our work.



Across 6 Continents

Over 500 Projects Delivered

Reputed for Quality and on-time Delivery



The Shanghai Tower - 128 floors, 632 meters



Shanghai World Financial Center - 101 floors, 494 meters
Shanghai Jinmao Tower - 88 floors, 421 meters



The Gate of the Orient - 66 floors, 302 meters



The Oriental Pearl TV Tower - 468 meters

MODEL APARTMENT

Block A - 3BHK 2310 sq.ft.

Block A - 3BHK 2310 sq.ft.



3 BHK | Unit No.: PA 04
 Super Built Up Area: 2310 sq. ft. | Carpet Area: 1607 sq. ft. [149.31 sq. mtrs.]
 Unit Nos.: PA 204 - PA 4504 | Facing - North | Balcony: 1 | Bathrooms: 3 | Bay Windows: 4
 (With Maid's Room)



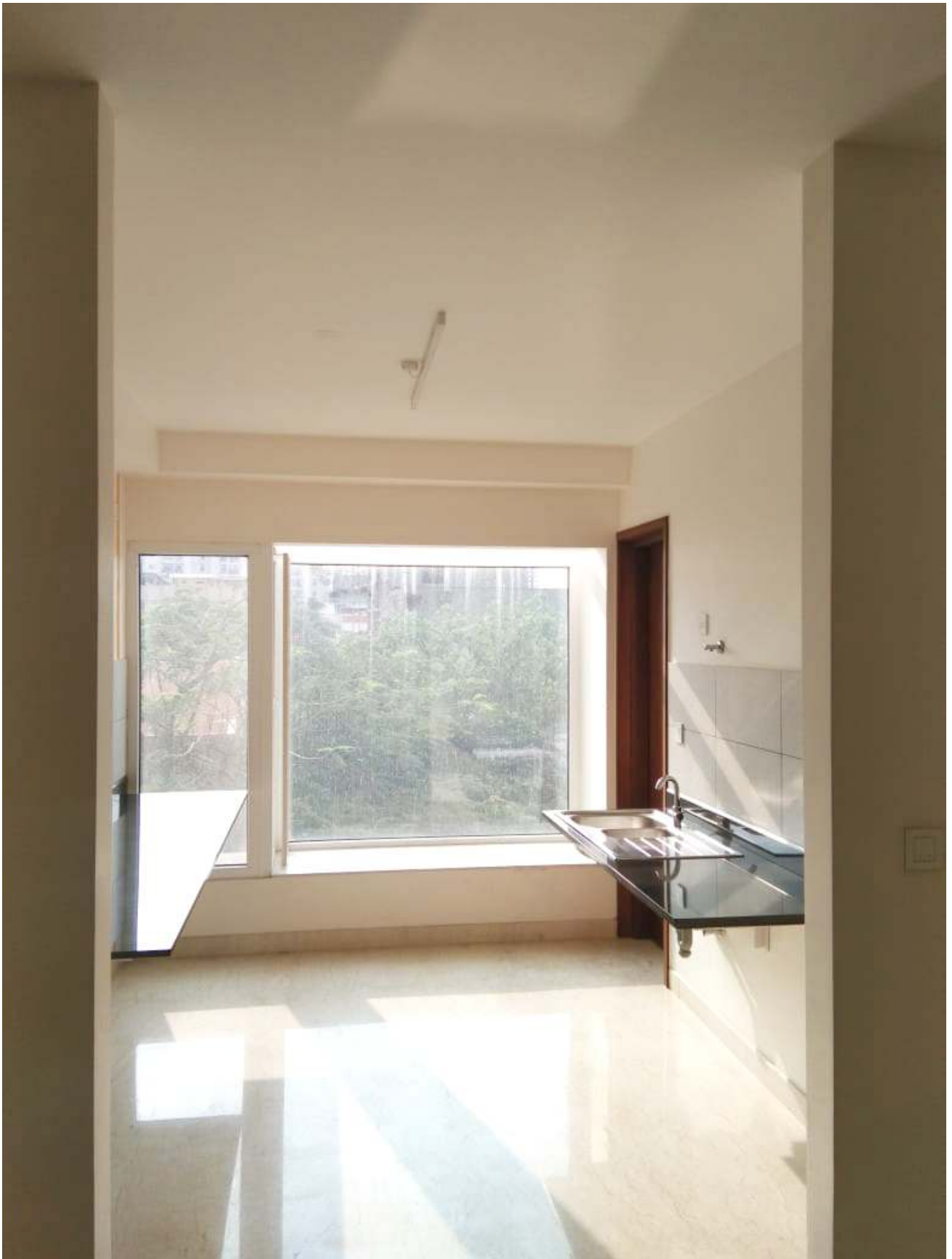
Block A - 3BHK 2310 sq.ft.



■ **LIVING ROOM**

15'1" x 18'10"

Block A - 3BHK 2310 sq.ft.



■ **KITCHEN**

11'6" x 8'7"

Block A - 3BHK 2310 sq.ft.



■ **MASTER BED ROOM**

15'1" x 18'10"

Block A - 3BHK 2310 sq.ft.



■ **SHOWER**
4'0" x 4'6"

■ **TOILET**
7'2" x 8'0"

■ **WASH ROOM**

Block A - 3BHK 2310 sq.ft.



■ **BED ROOM**

13'9" x 12'0"

Block A - 3BHK 2310 sq.ft.



■ **TOILET**
8'7" x 5'11"

■ **WASH ROOM**

Block A - 3BHK 2310 sq.ft.



■ **BED ROOM**

12'0" x 14'7"

Block A - 3BHK 2310 sq.ft.



■ **BALCONY**

15'1"X6'6"

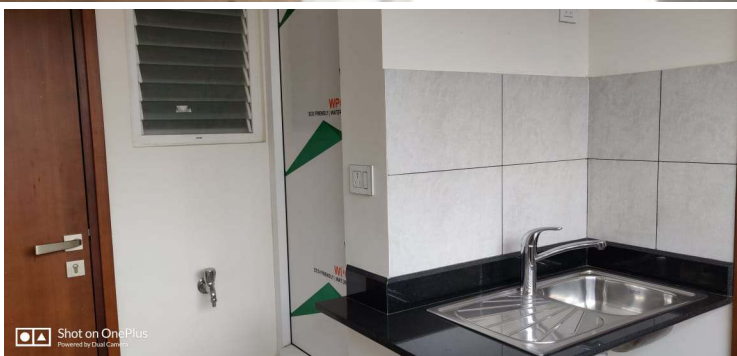
Block A - 3BHK 2310 sq.ft.



■ **DINING**

15'10"X11'3"

Block A - 3BHK 2310 sq.ft.



■ **UTILITY**
7'7"X9'1"



■ **TOILET**
3'1"X4'10"

■ **SERVANT'S ROOM**
6'0"X6'6"

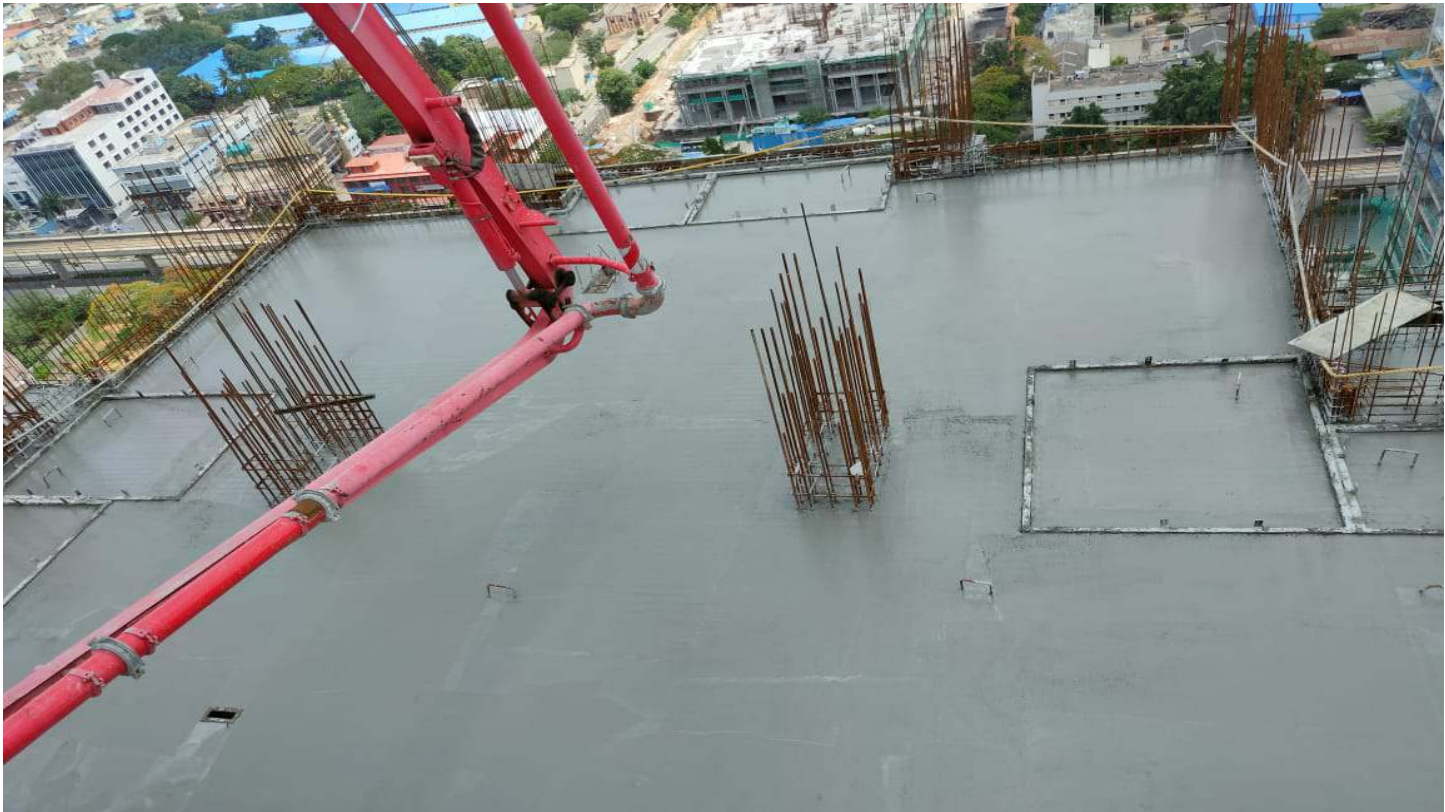
Construction work

Progress from 1st April 2021 till 24th May 2021

35TH FLOOR TOWER A



■ SLAB WORK COMPLETED



■ SLAB WORK COMPLETED

34TH FLOOR TOWER A



■ SLAB WORK REINFORCEMENT



■ SLAB WORK REINFORCEMENT

34TH FLOOR TOWER A



■ SLAB WORK COMPLETED



■ SLAB WORK COMPLETED

33RD FLOOR TOWER B



- REINFORCEMENT WORK IN PROGRESS.



- SHUTTERING WORK IN PROGRESS.



Email: marketing@cntcindiaprojects.com
www.cntcindiaprojects.com



The Presidential Tower

No. 8, Tumkur Road,
Near Taj Yeshwanthpur,
Bengaluru, India - 560 022.

Join us: CNTC India Projects



RERA Registration No. PRM/KA/RERA/1251/309/PR/171014/000565

Disclaimer:

The plans, specifications, images (including stock images) and other details herein are only indicative and the Developer reserves the right to change any or all of these in the interest of the development. This printed material does not constitute an offer and/or contract of any type between the Developer and the recipient. Any purchaser of this development shall be governed by the terms and conditions of the Agreement for Sale entered into between the parties and no details mentioned in this printed material shall in any way govern such transactions.

TPT Brochure/V.1.10/December 2019