

LUXURY LIVING.  
ELEVATED TO NEW HEIGHTS.



RERA Registration No. PRM/KA/RERA/1251/309/PR/171014/000565

TALLEST RESIDENTIAL TOWER IN SOUTH INDIA  
CONSTRUCTION UPDATE  
AUG 2021





These are the latest photographs of the progress at the construction site, to give you an insight into the work that has been completed in the last month. **We value your trust in CNTC Hong Kong and thank you for your support.**

## *1. Podium Driveway*





These are the latest photographs of the progress at the construction site, to give you an insight into the work that has been completed in the last month. **We value your trust in CNTC Hong Kong and thank you for your support.**

## *2. East view*





3. Front view



4. Side View





5. View of Block A



6. View of Block B





7. 38th floor Rebar structure progress on Tower A

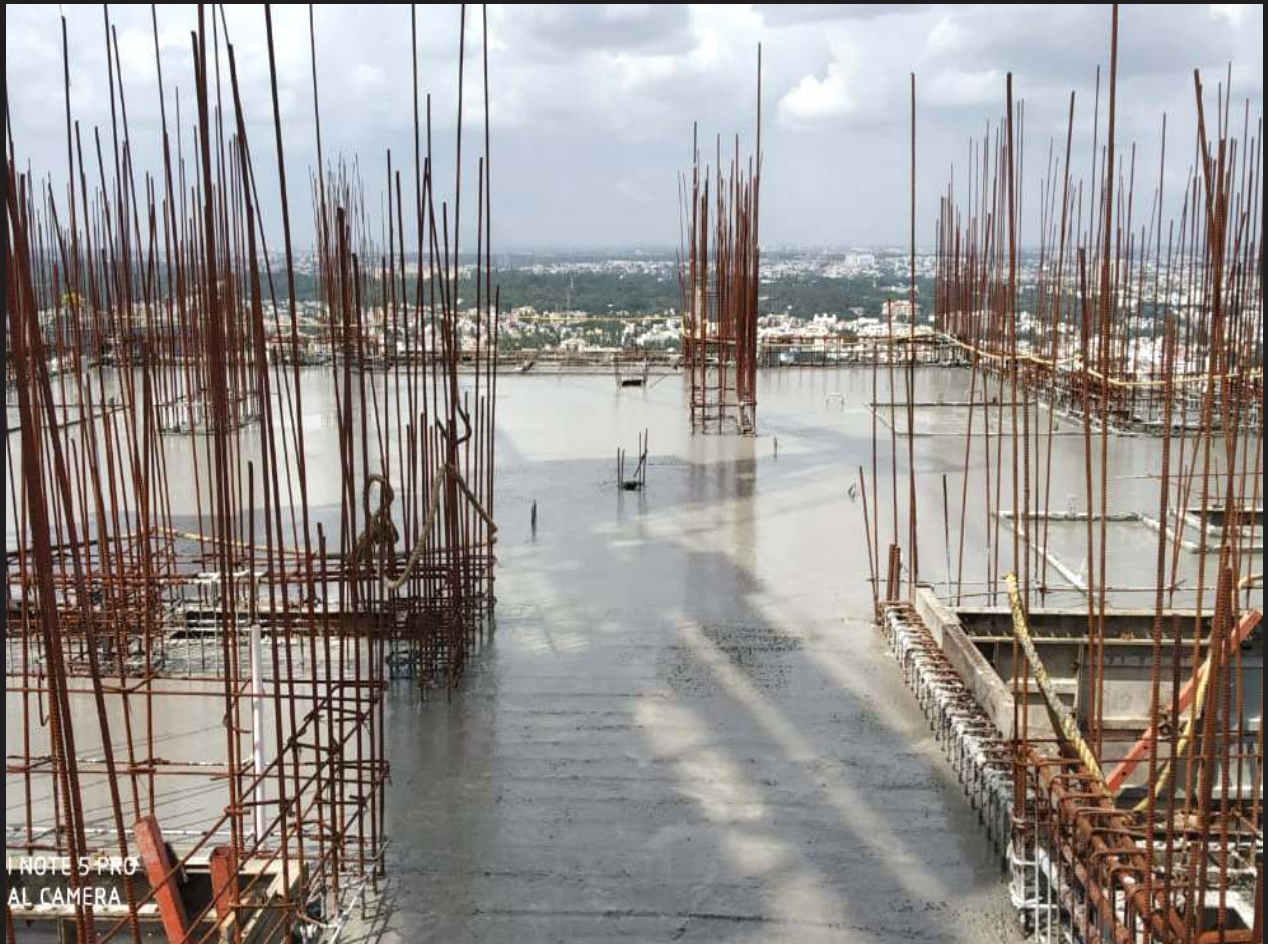


8. 38th floor shuttering work progress on Tower A





9. 35th floor slab concrete work completed on Tower B

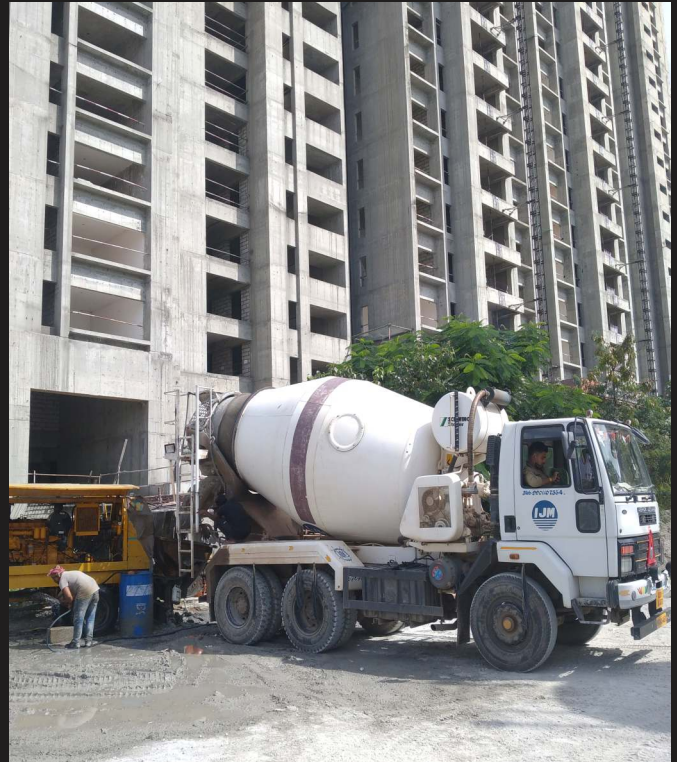




## 10. Lawn work is progress - laying drain cell



## 11. Procurement of Materials





12. Basement parking area cleaning is progress





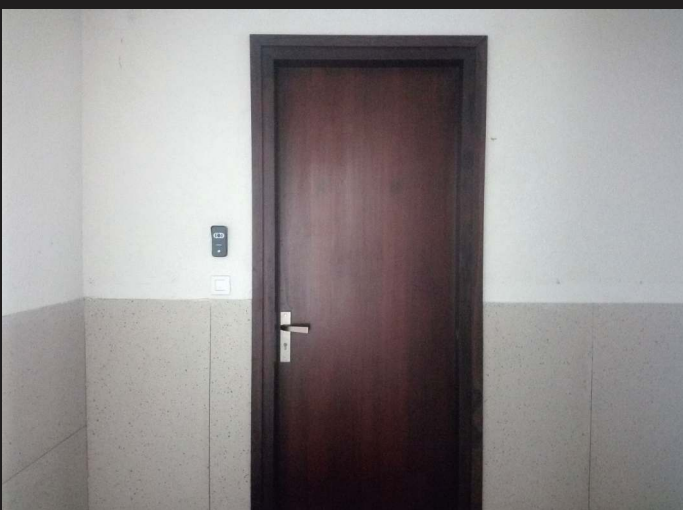
### 13. Actual flat completed



*Final coat of painting Completed*



*Kitchen counter slab fixing work completed*



*Door fixing & polishing work Completed*



*CP & Sanitary fixtures fixing work Completed*



# CNTC PORTFOLIO

Across 6 Continents | Over 500 Projects Delivered | Reputed for Quality and on - time Delivery



Shanghai Lupu Bridge



Shanghai Tower



Shanghai World Financial Center  
Shanghai Jinmao Tower



Gate of the Orient



Oriental Pearl TV Tower



T3 Terminal of Beijing Capital International Airport





THE  
PRESIDENTIAL  
TOWER



The Presidential Tower

No. 8, Tumkur road, Near The Taj, Yeshwanthpur, Bengaluru - 560022.

Ph. +91 96861 07178 | [www.cntcindiaprojects.com](http://www.cntcindiaprojects.com)

RERA Registration No. PRM/KA/RERA/1251/309/PR/171014/000565