

LUXURY LIVING. ELEVATED TO NEW HEIGHTS.



RERA Registration No. PRM/KA/RERA/1251/309/PR/171014/000565

TALLEST RESIDENTIAL TOWER IN SOUTH INDIA
CONSTRUCTION UPDATE
SEP 2021



These are the latest photographs of the progress at the construction site, to give you an insight into the work that has been completed in the last month. **We value your trust in CNTC Hong Kong and thank you for your support.**

1. Podium Driveway



These are the latest photographs of the progress at the construction site, to give you an insight into the work that has been completed in the last month. **We value your trust in CNTC Hong Kong and thank you for your support.**

2. East view



3. Front view



4. Side View



5. View of Block A



6. View of Block B



7. 39th floor Rebar structure progress on Tower A



8. 39th floor shuttering work progress on Tower A



9. 39th floor slab concrete work completed on Tower A



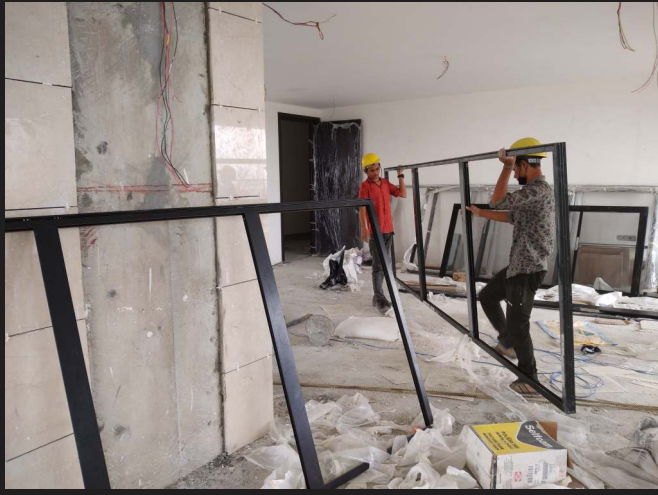
10. 40th floor Rebar structure progress on Tower A



11. 40th floor shuttering work progress on Tower A



12. 31st floor glass fabrication installations on Tower B



13. Lawn work is progress - laying drain cell



14. Procurement of Materials



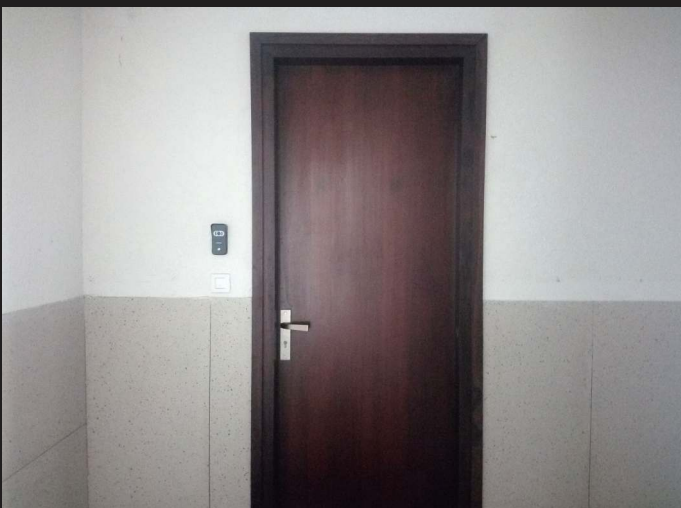
15. Actual flat completed



Final coat of painting Completed



Kitchen counter slab fixing work completed



Door fixing & polishing work Completed



CP & Sanitary fixtures fixing work Completed

CNTC PORTFOLIO

Across 6 Continents | Over 500 Projects Delivered | Reputed for Quality and on - time Delivery



Shanghai Lupu Bridge



Shanghai Tower



Shanghai World Financial Center
Shanghai Jinmao Tower



Gate of the Orient



Oriental Pearl TV Tower



T3 Terminal of Beijing Capital International Airport



THE
PRESIDENTIAL
TOWER



The Presidential Tower

No. 8, Tumkur road, Near The Taj, Yeshwanthpur, Bengaluru - 560022.

Ph. +91 96861 07178 | www.cntcindiaprojects.com

RERA Registration No. PRM/KA/RERA/1251/309/PR/171014/000565